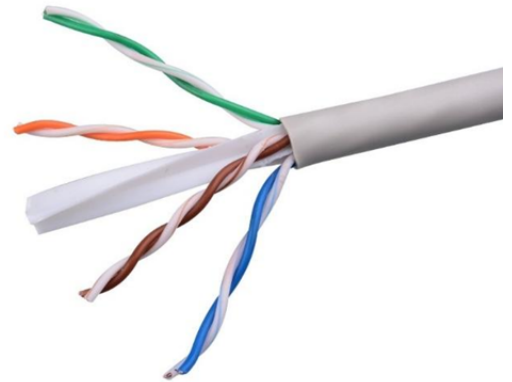
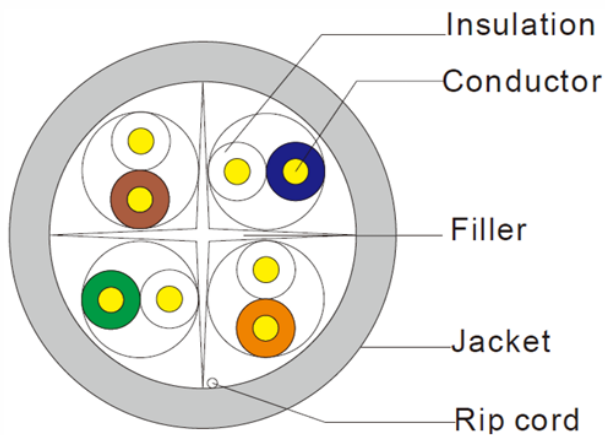


## CAT6 U/UTP 24AWG PVC CABLE

TN5006C624PVC



### Product Description

TEXA NETWORK's Category 6 U/UTP cables are manufactured and tested to the TIA/EIA 568-C2, EN50173-1 and ISO/IEC 11801 Category 6 specifications. TEXA NETWORK's Category 6 U/UTP cable is designed for optimal support of High-Speed data protocols delivering 1 Gbps performance to the workstation. Each cable consists of 8 colour coded 24AWG High Density polyethylene insulated conductors. Each conductors are twisted together to form 4 pairs with varying lengths. These pairs are then put around a central 'X' shaped polyethylene filler/Separator which helps in maintaining and enhancing the cable performance. TEXA NETWORK's CAT6 cable is designed for quick and easy installation where no special tools are required. CAT6 cable is supplied in "Reelex" packaging for fast, snag free installation.

### Features & Benefits

- Performance exceeding Category 6 specifications of 250MHz
- Performance compliance to ISO/IEC 11801 and ANSI/TIA-568-C2
- ThirdParty Delta EC verified
- AWG24,SolidBareCopper
- PVC
- 25Years System Warranty

### Standards Complied and Verified for Category 6 Cable Performance

- ISO/IEC 11801:2017
- ANSI/TIA-568-C2:2009
- IEC61156-5:2009 + AMD1:2012 CSV Consolidated version
- BSEN50173-1:2018
- EN50288-6-1:2013

## Specification

Overall Diameter (mm)	5.9 ±0.3	Nominal Velocity of Propagation (NVP)	69%
Sheath Type / Surface	PVC / Clean, Frap, Satiation	Rip cord	Yes
Insulation Material	HDPE	Drain Wire	No
Conductor Diameter (mm)	0.53 (±0.01)	Max. Pulling Force (N)	115
Conductor Material	Solid Bare Copper	Min. Bend Radius during Installation	4xD (Overall diameter)
Impedance (Ω) @ 1-250 MHz	100 ±15 Ω	Min. Bend Radius after Installed	4xD (Overall diameter)
Delay Skew (ns/100m) @1-250 MHz	≤ 45	Installation Temperature Range	0°C to +60°C
Max. DC Resistance(Ω/100m)	9.38	Operating Temperature Range	-20°C to +70°C
Max. DC Conductor ResistanceUnbalance (%)	5.0	Packing Length (Meters)	305 ±1.5

Freq. (MHz)	RL (Min. dB)	ATTN (Max. dB/100m)	NEXT (Min. dB)	PSNEXT (Min. dB)	ELFEXT (ACR-F) (Min. dB/100m)	PSELFEXT (PSACR-F) (Min. dB/100m)	Phase Delay (Max. ns)
1	19.1	1.9	65.0	62.0	64.2	61.2	570.00
4.0	21.0	3.5	64.1	61.8	52.1	49.1	552.00
8.0	21.0	5.0	59.4	57.0	46.1	43.1	547.00
10.0	21.0	5.5	57.8	55.5	44.2	41.2	545.00
16.0	20.0	7.0	54.6	52.2	40.1	37.1	543.00
20.0	19.5	7.9	53.1	50.7	38.2	35.2	542.00
25.0	19.0	8.9	51.5	49.1	36.2	33.2	541.00
31.25	18.5	10.0	50.0	47.5	34.3	31.3	540.00
62.5	16.0	14.4	45.1	42.7	28.3	25.3	539.00
100	14.0	18.6	41.8	39.3	24.2	21.2	538.00
200	11.0	27.4	36.9	34.3	18.2	15.2	537.00
250	10.0	31.1	35.3	32.7	16.2	13.2	536.00

## Part Number

(TN5006C624PVC)

Horizontal Cable, CAT6, U/UTP, 305m, PVC Sheath, 24AWG, Grey