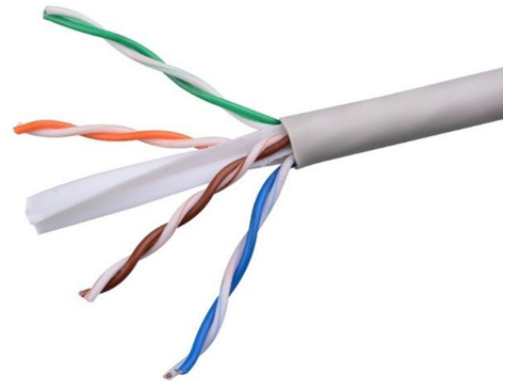
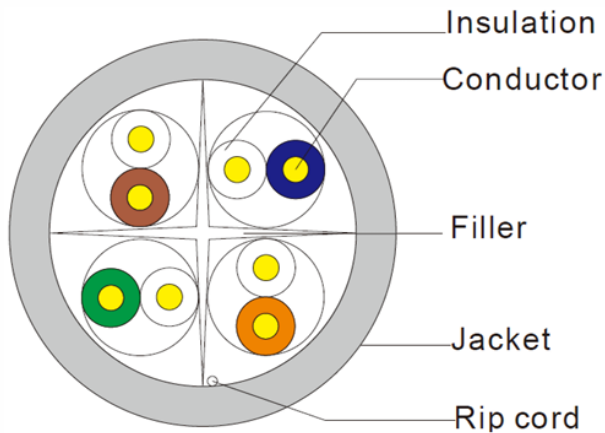


CAT6 U/UTP 24AWG PVC CABLE

TN5006C624PVC



Product Description

TEXA NETWORK's Category 6 U/UTP cables are manufactured and tested to the TIA/EIA 568-C2, EN50173-1 and ISO/IEC 11801 Category 6 specifications. TEXA NETWORK's Category 6 U/UTP cable is designed for optimal support of High-Speed data protocols delivering 1 Gbps performance to the workstation. Each cable consists of 8 colour coded 24AWG High Density polyethylene insulated conductors. Each conductors are twisted together to form 4 pairs with varying lengths. These pairs are then put around a central 'X' shaped polyethylene filler/Separator which helps in maintaining and enhancing the cable performance. TEXA NETWORK's CAT6 cable is designed for quick and easy installation where no special tools are required. CAT6 cable is supplied in "Reelex" packaging for fast, snag free installation.

Features & Benefits

- Performance exceeding Category 6 specifications of 250MHz
- Performance compliance to ISO/IEC 11801 and ANSI/TIA-568-C2
- ThirdParty Delta EC verified
- AWG24,SolidBareCopper
- PVC
- 25Years System Warranty

Standards Complied and Verified for Category 6 Cable Performance

- ISO/IEC 11801:2017
- ANSI/TIA-568-C2:2009
- IEC61156-5:2009 + AMD1:2012 CSV Consolidated version
- BSEN50173-1:2018
- EN50288-6-1:2013

Specification

| | | | |
|---|------------------------------|---------------------------------------|------------------------|
| Overall Diameter (mm) | 5.9 ±0.3 | Nominal Velocity of Propagation (NVP) | 69% |
| Sheath Type / Surface | PVC / Clean, Frap, Satiation | Rip cord | Yes |
| Insulation Material | HDPE | Drain Wire | No |
| Conductor Diameter (mm) | 0.53 (±0.01) | Max. Pulling Force (N) | 115 |
| Conductor Material | Solid Bare Copper | Min. Bend Radius during Installation | 4xD (Overall diameter) |
| Impedance (Ω) @ 1-250 MHz | 100 ±15 Ω | Min. Bend Radius after Installed | 4xD (Overall diameter) |
| Delay Skew (ns/100m) @1-250 MHz | ≤ 45 | Installation Temperature Range | 0°C to +60°C |
| Max. DC Resistance(Ω/100m) | 9.38 | Operating Temperature Range | -20°C to +70°C |
| Max. DC Conductor ResistanceUnbalance (%) | 5.0 | Packing Length (Meters) | 305 ±1.5 |

| Freq. (MHz) | RL (Min. dB) | ATTN (Max. dB/100m) | NEXT (Min. dB) | PSNEXT (Min. dB) | ELFEXT (ACR-F) (Min. dB/100m) | PSELFEXT (PSACR-F) (Min. dB/100m) | Phase Delay (Max. ns) |
|-------------|--------------|---------------------|----------------|------------------|-------------------------------|-----------------------------------|-----------------------|
| 1 | 19.1 | 1.9 | 65.0 | 62.0 | 64.2 | 61.2 | 570.00 |
| 4.0 | 21.0 | 3.5 | 64.1 | 61.8 | 52.1 | 49.1 | 552.00 |
| 8.0 | 21.0 | 5.0 | 59.4 | 57.0 | 46.1 | 43.1 | 547.00 |
| 10.0 | 21.0 | 5.5 | 57.8 | 55.5 | 44.2 | 41.2 | 545.00 |
| 16.0 | 20.0 | 7.0 | 54.6 | 52.2 | 40.1 | 37.1 | 543.00 |
| 20.0 | 19.5 | 7.9 | 53.1 | 50.7 | 38.2 | 35.2 | 542.00 |
| 25.0 | 19.0 | 8.9 | 51.5 | 49.1 | 36.2 | 33.2 | 541.00 |
| 31.25 | 18.5 | 10.0 | 50.0 | 47.5 | 34.3 | 31.3 | 540.00 |
| 62.5 | 16.0 | 14.4 | 45.1 | 42.7 | 28.3 | 25.3 | 539.00 |
| 100 | 14.0 | 18.6 | 41.8 | 39.3 | 24.2 | 21.2 | 538.00 |
| 200 | 11.0 | 27.4 | 36.9 | 34.3 | 18.2 | 15.2 | 537.00 |
| 250 | 10.0 | 31.1 | 35.3 | 32.7 | 16.2 | 13.2 | 536.00 |

Part Number

(TN5006C624PVC)

Horizontal Cable, CAT6, U/UTP, 305m, PVC Sheath, 24AWG, Grey, Blue, Orange