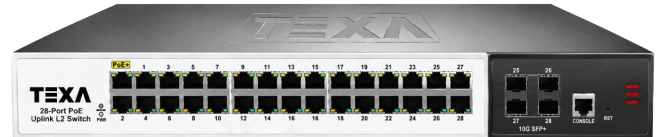


**28-port 10G Uplink L2+ Managed Ethernet Fiber Switch  
(TN310GU28PES)  
60W/AC100-240V)**



## OVERVIEW

The TN310GU28PES is a 10G uplink L2+ managed Ethernet fiber switch independently developed by ONV. It has 24\*10/100/1000Base-T RJ45 ports and 4\*1/10G SFP+ fiber slot ports. Each port can support wire-speed forwarding.

The TN310GU28PES has L2+ full network management function, supports IPV4/IPV6 management, static route full line rate forwarding, complete security protection mechanism, complete ACL/QoS policy and rich VLAN functions, and is easy to manage and maintain. Supports multiple network redundancy protocols STP/RSTP/MSTP (<50ms) and (ITU-T G.8032) ERPS(<20ms) to improve link backup and network reliability. When one-way network fails, communication can be quickly restored to ensure important Uninterrupted communication for applications. According to the actual application requirements, you can configure multiple application services such as port traffic control, VLAN division, and SNMP through the Web network management mode. It satisfies high-density network application environment and is suitable for medium, large-scale scenes such as hotel, campus, park, shopping mall, scenic spot, hospital, bank to form an economical, efficient and reliable communication network.

## FEATURE

### FullGigabit access, 10G SFP+ fiber port uplink

- All series supports “Gigabit Ethernet port and 10G SFP+ fiber slot port “combination, which enables users to flexibly build networking to meet the needs of various scenarios.
- Support non-blocking wire-speed forwarding.
- Support full-duplex based on IEEE802.3x and half-duplex based on backpressure..

### Strongbusiness processing capability

- IEEE802.1Q VLAN, flexible VLAN division, Voice VLAN and QinQ configuration.
- QoS, Priority mode based on 802.1P, Port & DSCP, queue scheduling algorithm including Equ, SP, WRR & SP+WRR.
- ALC, filter data packet through configuring matching rules, processing operation & time permission, and provide flexible and safe access control.
- IGMPV1/V2 and IGMP Snooping. ERPS/STP/RSTP/MSTP.
- Static and dynamic aggregation.

### Security

- 802.1X authentication.
- Port isolation, Storm control.
- IP-MAC-VLAN-Port binding.

#### Stable and reliable

- Low power consumption, galvanized steel casing, The fan active cooling.
- Self-developed power supply, high redundancy design, providing a long term and stable power output.
- CCC, CE, FCC, RoHS.
- The user-friendly panel, it can show the device status through the LED indicator of PWR, SYS, Link, L/A.

#### Easy operation and maintenance management

- Web management, CLI command line (Console, Telnet), SNMP (V1/V2/V3).
- HTTPS, SSLV3, and SSH V1/V2.
- RMON, system log, LLDP, and port traffic statistics.
- CPU monitoring, memory monitoring, Ping test, and cable diagnose.

## TECHNICAL SPECIFICATION

Model	TN310GU28PES)	TN310GU28PES)
<b>Interface Characteristics</b>		
Fixed Port	24*10/100/1000Base-T RJ45 ports (Data) 4*1/10G RJ45 ports (Data) 1*Console RS232 port (115200,N,8,1)	
Ethernet Port	Port 1-24 support 10/100/1000Base-T, auto-sensing, Full/half duplex MDI/MDI-X self-adaption	
Twisted Pair Transmission	10BASE-T: Cat3,4,5 UTP(≤100 meter) 100BASE-TX: Cat5 or later UTP(≤100 meter) 1000BASE-T: Cat5e or later UTP(≤100 meter)	
SFP Slot Port	10G SFP+ optical fiber interface, default not matching optical modules (optional order single-mode / multi-mode, single fiber / dual fiber optical module. LC)	
SFP Port Expansion	Turbo overclocking 2.5G optical module and ring	
Optical Cable/ Distance	Multi mode: 850nm / 0 ~ 500M(1.25G), 0-300M(10G), single mode: 1310nm / 0 ~ 40KM, 1550nm 0 ~ 120KM.	
<b>Chip Parameter</b>		
Network	L2+	L3

Management Type	
Network Protocol	IEEE802.3 10BASE-T, IEEE802.3i 10Base-T IEEE802.3u 100Base-TX, IEEE802.3ab 1000Base-T IEEE802.3z 1000Base-X, IEEE802.3ae 10GBase-SR/LR IEEE802.3x
Forwarding Mode	Store and Forward(Full Wire Speed)
Switching Capacity	598Gbps
Forwarding Rate@64byte	95.23Mpps
MAC	32K
Buffer Memory	32M
Jumbo Frame	9.6K
LED Indicator	Power: PWR (yellow), system: SYS(yellow), Network: Link (yellow), fiber port: L/A (green)
Reset Switch	yes, support one key to restore factory settings
<b>Power</b>	
Total PWR / Input Voltage	60W/AC100-240V)
Power Consumption	Standby<25W, Full Load<35W
Power Supply	Built-in power supply, AC 100~240V 50-60Hz 1.0A
<b>Physical Parameter</b>	
Operation TEMP / Humidity	-20~+55°C;5%~90% RH Non condensing

Storage TEMP / Humidity	-40~+80°C;5%~95% RH Non condensing
Dimension (L*W*H)	440*290*44.5mm
Net /Gross Weight	<3.5kg / <4.0kg
Installation	Desktop, wall mounted,19 inch 1U cabinet installation
<b>Certification &amp; Warranty</b>	
Lightning protection / protection level	Lightning protection: 4KV 8/20us; Protection level: IP30
Certification	CCC;CE mark, commercial; CE/LVD EN60950;FCC Part 15 Class B; RoHS
Warranty	3 years, lifelong maintenance.