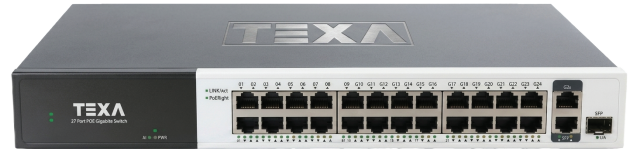


27-port Full Gigabit PoE Switch (TN327PUMGS) 250W/(AC100-240V)



OVERVIEW

The TN327PUMGS is a unmanaged Gigabit PoE switch. It has 26*10/100/1000Base-T adaptive RJ45 ports and 1*1000Base-X uplink SFP fiber port. Port 1-24 can support PoE+ standard and single-port PoE power up to 30W. As a PoE power supply device, it can automatically detect and recognize the power-receiving equipment that meets the standard and supply power through the network cable. It can supply power to PoE terminal equipment such as wireless AP, IP camera, VoIP phone, and building visual access control, intercom through a network cable, to meet the network environment that needs high-density PoE power supply, suitable for hotels, campuses, parks, supermarkets, scenic spots, factory quarters and SMB small and medium-sized enterprises form a cost-effective network. Unmanaged mode, plug, and play, no configuration, easy to use.

FEATURE

Gigabit access, uplink SFP fiber port

- Support non-blocking wire-speed forwarding for smoother transmission.
- Support full-duplex based on IEEE802.3x and half-duplex based on Backpressure.
- Provide Gigabit RJ45 ports and uplink SFP port for flexible networking and meets the networking requirements of various scenarios..

SmartPoE power supply

- 24*10/100/1000Base-TRJ45 ports support PoE power to meet the needs of PoE power in various scenarios in the security field.
- Comply with PoE+ power supply standard, automatically identify PoE devices for power supply without damaging non-PoE devices, and the single port max PoE output power is 30W..

Stable and reliable, easy to use

- CCC, CE, FCC, RoHS.
- Plug and play, no configuration, simple and convenient.
- The user-friendly panel can show the device status through the LED indicator of PWR, Link, and PoE.
- Self-developed power supply, high redundancy design, providing a long term and stable PoE power output.
- Low power consumption, no fan, galvanized steel shell, and excellent heat dissipation to ensure stable operation of the equipment.

TECHNICAL SPECIFICATION

| Model | TN327PUMGS |
|----------------------------------|---|
| Interface Characteristics | |
| Fixed Port | 1*1000Base-X uplink SFP fiber port (Data) 2*10/100/1000Base-T uplink RJ45 ports (Data) 24*10/100/1000Base-T PoE ports (Data/Power) |
| Ethernet Port | Port 1-26 can support 100/1000Base-T(X) auto-sensing, full/ half duplex MDI/ MDI-X self-adaption |
| Twisted Pair Transmission | 1*1000Base-X uplink SFP fiber port (Data) 2*10/100/1000Base-T uplink RJ45 ports (Data) 24*10/100/1000Base-T PoE ports (Data/Power) |
| Optical Fiber Port | Gigabit optical fiber port, default no include optical module (optional single-mode/ multi-mode, single fiber/ dual fiber optical module. LC) |
| Optical Cable/ Distance | Multi-mode: 850nm/ 0-550m, Single-mode: 1310nm/ 0-40km, 1550nm/ 0-120km |
| Chip Parameter | |
| Network Protocol | IEEE 802.3 10BASE-T, IEEE 802.3i 10Base-T, IEEE 802.3u 100Base-TX, IEEE 802.3ab 1000Base-T, IEEE 802.3z 1000Base-X, IEEE 802.3x |
| Forwarding Mode | Store and Forward (Full Wire Speed) |
| Switching Capacity | 54Gbps (non-blocking) |
| Forwarding Rate@64byte | 40.18Mpps |
| MAC | 8K |

| | |
|-------------------------------------|--|
| Buffer Memory | 4M |
| Jumbo Frame | 9.2K |
| LED Indicator | Power: PWR (Green), Network: Link (Green), PoE: PoE (Red) |
| PoE & Power Supply | |
| PoE Port | Port 1-24 |
| Power Supply Pin | 1/2(+) 3/6(-) |
| Max Power Per Port | 30W, PoE+ |
| Total PWR / Input Voltage | 250W/ (AC100-240V) |
| Power Consumption | Standby <8W, Full load <250W |
| Power Supply | Built-in power supply, AC100~240V 50-60Hz, 4.1A |
| Physical Parameter | |
| Operation TEMP / Humidity | -20~+55°C, 5%~90% RH Non condensing |
| Storage TEMP / Humidity | -40~+80°C, 5%~95% RH Non condensing |
| Dimension (L*W*H) | 350*215*44mm |
| Net /Gross Weight | 2.0kg / 2.5kg |
| Installation | Desktop, Rack mounted |
| Certification & Warranty | |
| Lightning Protection | Lightning protection: 4KV 8/20us, Protection level: IP30 |
| Certification | CCC, CE mark, commercial, CE/LVD EN62368-1, FCC Part 15 Class B, |
| | RoHS |
| Warranty | 1 year, lifelong maintenance. |